



# **Weybridge-New Haven BF 032-1(19)**

**Public Information Meeting Traffic Control**

**Vermont Route 17 – Bridge #8 over Otter Creek**

May 2, 2018

# Introductions

- ❖ **Carolyn W. Carlson, P.E.**

VTrans Senior Structures Project Manager

- ❖ **Bob Suckert, P.E.**

VTrans Resident Engineer

- ❖ **David Peterson, P.E.**

VTrans Design Engineer

- ❖ **Michael Swartz, E.I.**

VTrans Design Engineer

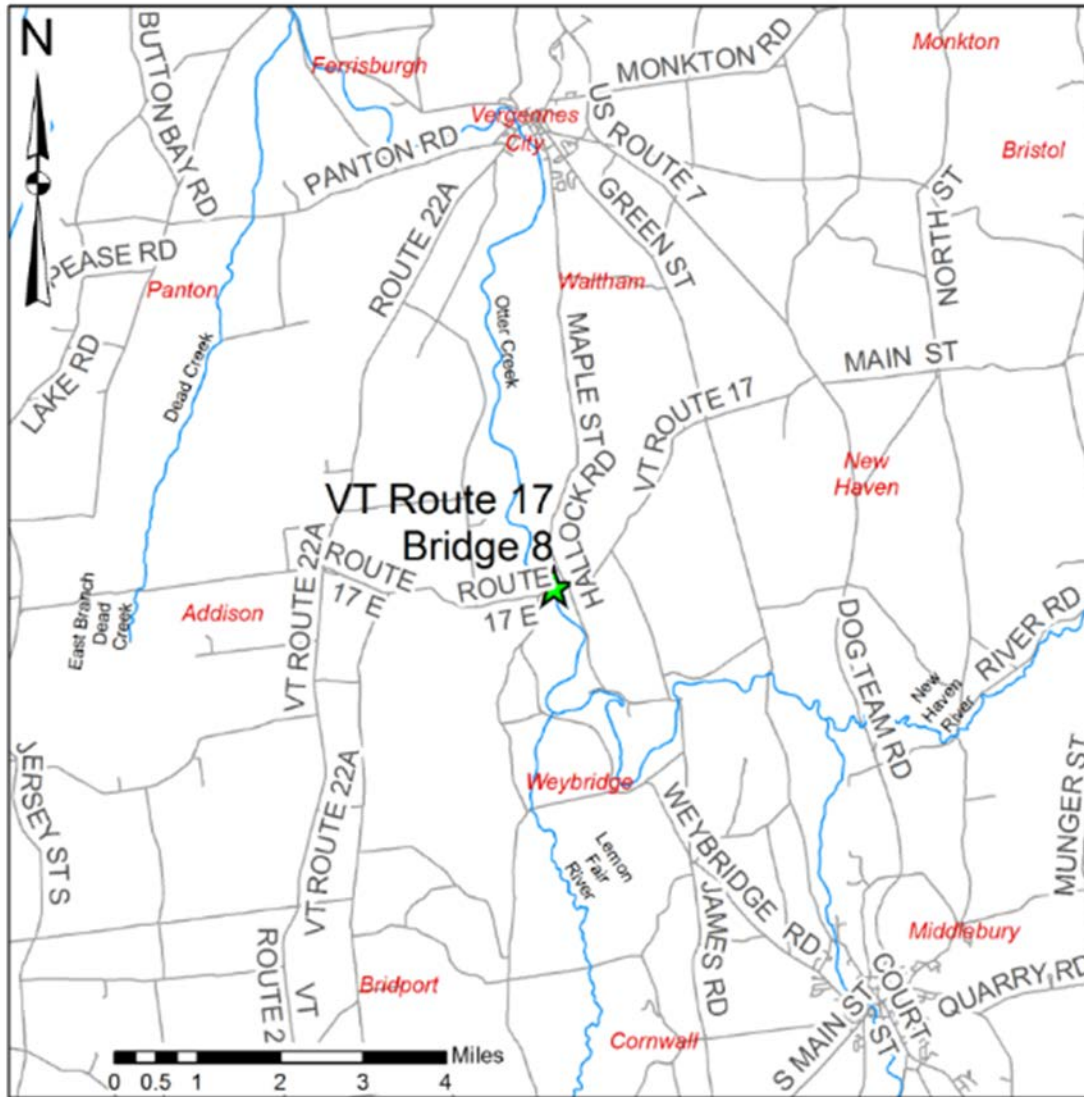
- ❖ **Jennifer Lacy, E.I.**

VTrans Design Engineer

# Purpose of Meeting

- Provide overview of bridge replacement project
- Discuss Route 17 bridge closure and detour
- Tentative construction schedule
- Provide an opportunity to ask questions and voice concerns

# Location



Bridge #8  
Project Location



Otter Creek Rd

17

17

23

Otter Creek

# Existing Conditions

- ❖ Substandard width (9' travel lane/1' shoulder)
- ❖ Substandard bridge railing
- ❖ Substandard bridge lane and shoulder widths
- ❖ Substandard horizontal alignment for posted 45 mph speed limit
- ❖ Overall condition of bridge reported as Fair per May 21, 2015 Inspection Report

# Existing Bridge Information



- ❖ Roadway Classification: Rural Minor Arterial
- ❖ Bridge Type: 3 Span Rolled Beam, Concrete Deck with Pavement
- ❖ Constructed: 1934
- ❖ Ownership: State of Vermont

# Fascia Concrete Failure





# Underside of Deck



# Construction To Date

- Cofferdam installed around pier



# Construction To Date

- Pier constructed to temporary elevation
- Removal of cofferdam



# Construction Prior to Closure

- Contractor back on site May 14<sup>th</sup>
- Erosion control measures installed for duration of project
- Single lane closures for pile installations
  - May 16 – May 22
- Install containment under bridge for demolition
- Traffic control plan signs and portable changeable message signs installed

A white rectangular sign with a black border and the words "ROAD CLOSED" in large, bold, black capital letters. The sign is mounted on a white post. The post is flanked by several horizontal barriers with red and white diagonal stripes. In the background, there is a concrete barrier, a chain-link fence, and green trees under a clear blue sky.

**ROAD  
CLOSED**



**VERMONT**  
AGENCY OF TRANSPORTATION

# Construction Schedule and Timeline

- Bridge Closed to Traffic – Monday June 4<sup>th</sup>, 2018
- Bridge Open to Traffic – Friday August 3<sup>rd</sup>, 2018
- Project Completion – October 12<sup>th</sup>, 2018
- Landscape Completion – June 1<sup>st</sup>, 2019
- Contract Completion – Oct 4<sup>th</sup>, 2019

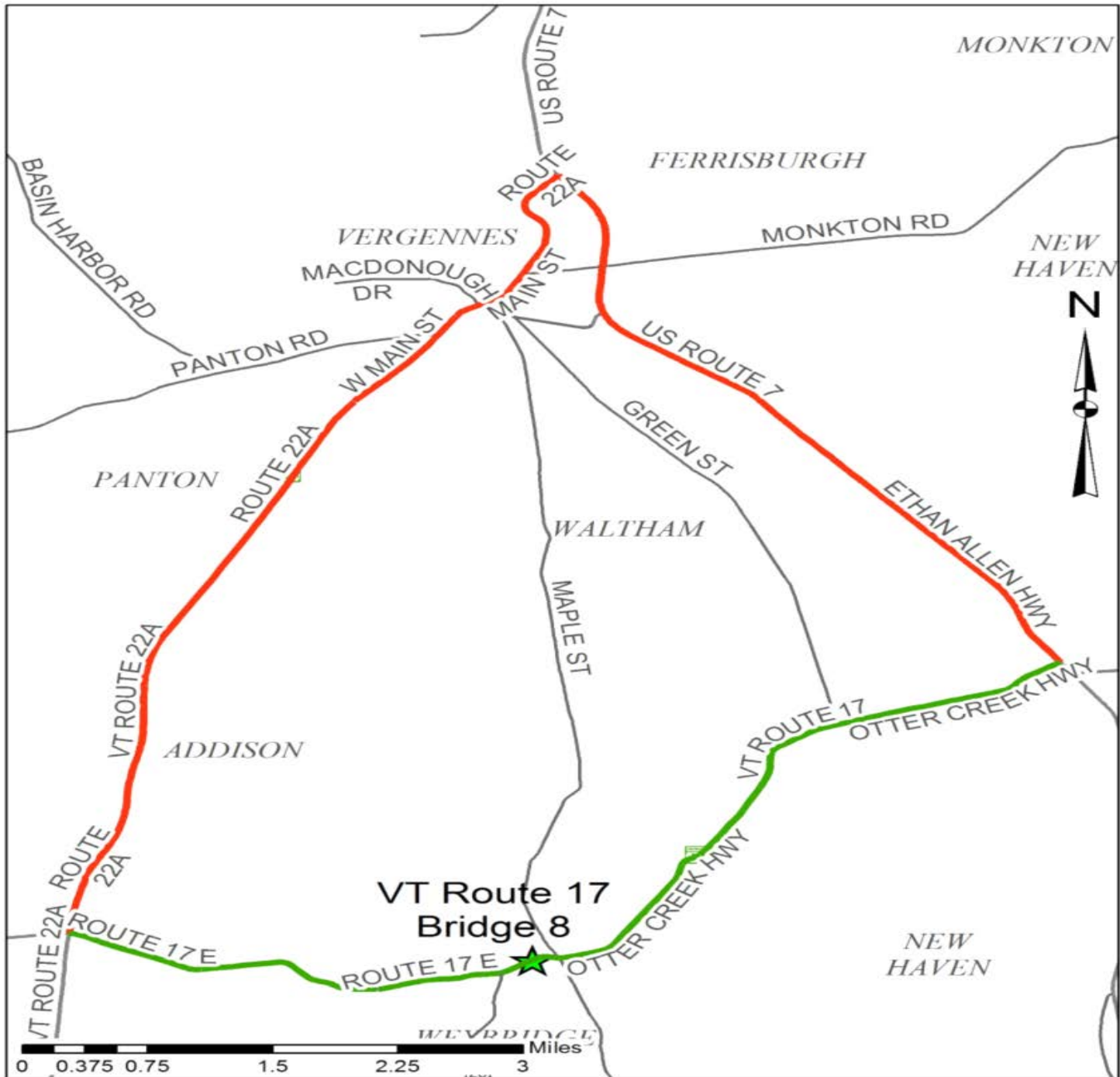
# Bridge Closure



# Maintenance of Traffic

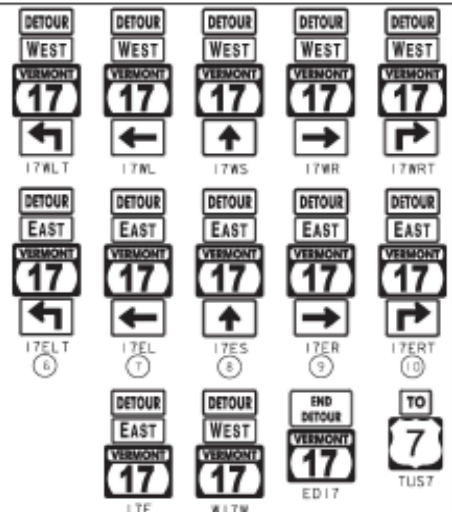
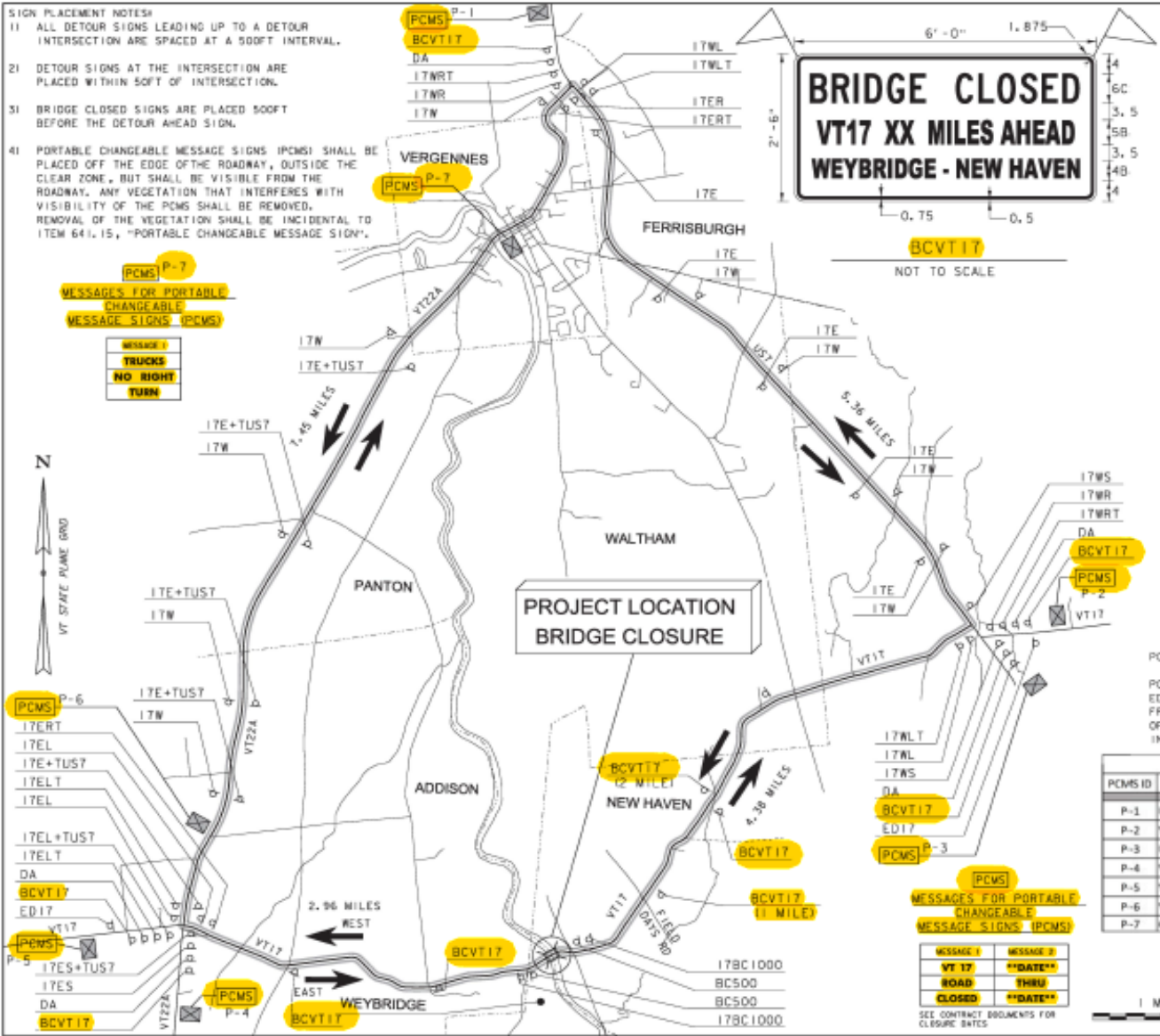
- VT Route 17 closed to traffic
- From west end of detour:
  - Travel west on VT 17 to Route 22A
  - Travel north on VT Route 22A through Vergennes
  - Travel south on US Route 7 to VT Route 17
  - Continue east onto VT Route 17





**SIGN PLACEMENT NOTES**

- 11 ALL DETOUR SIGNS LEADING UP TO A DETOUR INTERSECTION ARE SPACED AT A 500FT INTERVAL.
- 21 DETOUR SIGNS AT THE INTERSECTION ARE PLACED WITHIN 50FT OF INTERSECTION.
- 31 BRIDGE CLOSED SIGNS ARE PLACED 300FT BEFORE THE DETOUR AHEAD SIGN.
- 41 PORTABLE CHANGEABLE MESSAGE SIGNS (PCMS) SHALL BE PLACED OFF THE EDGE OF THE ROADWAY, OUTSIDE THE CLEAR ZONE, BUT SHALL BE VISIBLE FROM THE ROADWAY. ANY VEGETATION THAT INTERFERES WITH VISIBILITY OF THE PCMS SHALL BE REMOVED. REMOVAL OF THE VEGETATION SHALL BE INCIDENTAL TO ITEM 64.15, "PORTABLE CHANGEABLE MESSAGE SIGN".



**PCMS NOTE\***

PORTABLE CHANGEABLE MESSAGE SIGNS (PCMS) SHALL BE PLACED OFF THE EDGE OF THE ROADWAY, OUTSIDE THE CLEAR ZONE, BUT SHALL BE VISIBLE FROM THE ROADWAY. ANY VEGETATION THAT INTERFERES WITH VISIBILITY OF THE PCMS SHALL BE REMOVED. REMOVAL OF THE VEGETATION SHALL BE INCIDENTAL TO ITEM 64.15, "PORTABLE CHANGEABLE MESSAGE SIGN".

PCMS ID	ROUTE LOCATION / PLACEMENT DESCRIPTION
P-1	US7 FACING SOUTH BOUND TRAFFIC, 300-500 FT FROM US7-VT22A INTERSECTION
P-2	VT17 FACING WEST BOUND TRAFFIC, 300-500 FT FROM US7-VT17 INTERSECTION
P-3	US7 FACING NORTH BOUND TRAFFIC, 300-500 FT FROM US7-VT17 INTERSECTION
P-4	VT22A FACING NORTH BOUND TRAFFIC, 300-500 FT FROM VT17-VT22A INTERSECTION
P-5	VT17 FACING EAST BOUND TRAFFIC, 300-500 FT FROM VT17-VT22A INTERSECTION
P-6	VT22A FACING SOUTH BOUND TRAFFIC, 300-500 FT FROM VT17-VT22A INTERSECTION
P-7	GREEN STREET

PROJECT NAME:	WEYBRIDGE-NEW HAVEN
PROJECT NUMBER:	BF 032-1(19)
FILE NAME:	02592detour.dgn
PROJECT LEADER:	C.W. CARLSON
DESIGNED BY:	D. PETERSON
DETOUR PLAN	
PLAT DATE:	23-MAY-2007
DRAWN BY:	M. LONGSTREET
CHECKED BY:	D. PETERSON
SHEET	3 OF 86

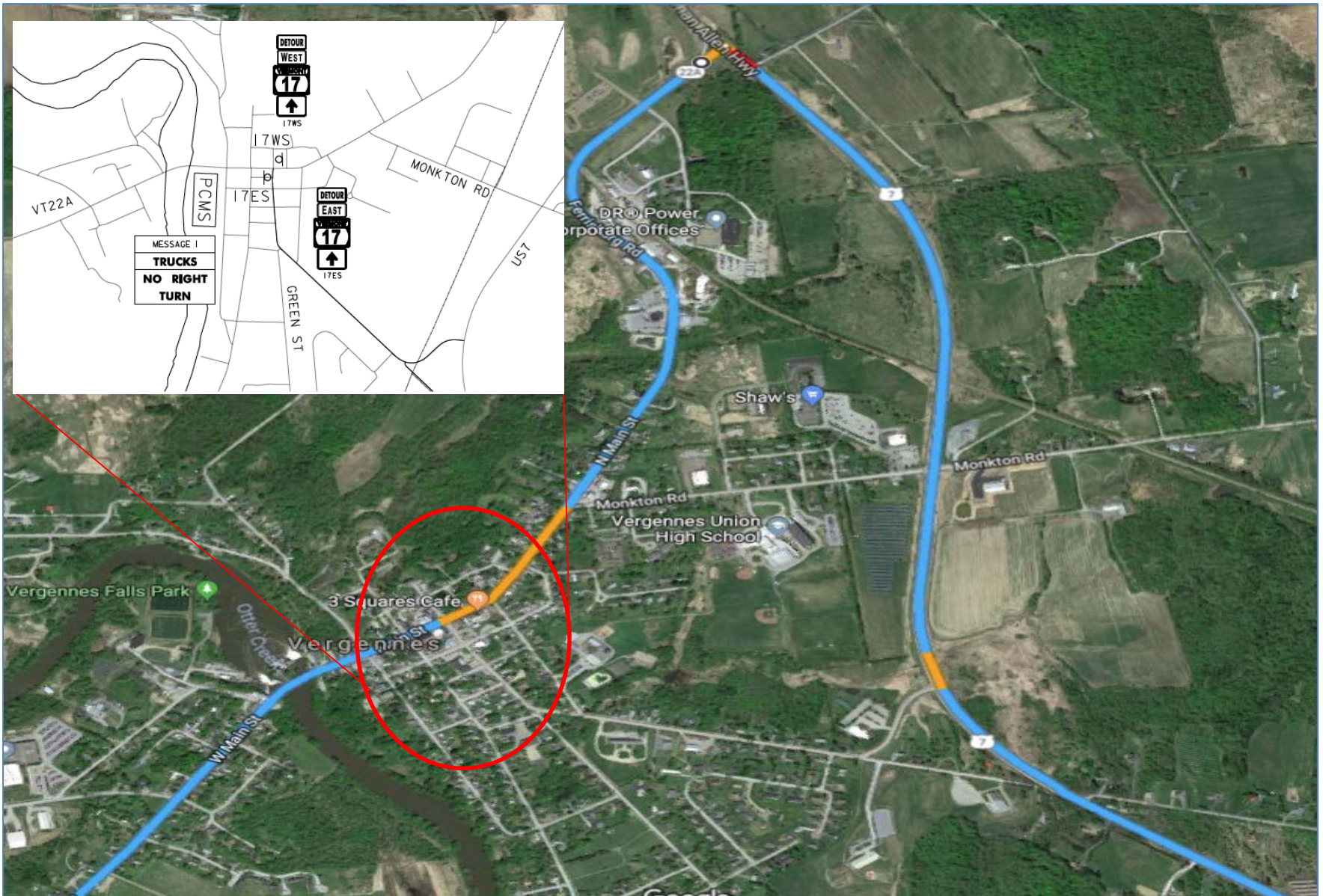
**PCMS**  
MESSAGES FOR PORTABLE CHANGEABLE MESSAGE SIGNS (PCMS)

MESSAGE 1	MESSAGE 2
VT 17	**DATE**
ROAD	THRU
CLOSED	**DATE**

SEE CONTRACT DOCUMENTS FOR CLIPARTS

# Signed Detour





# Detour Through Vergennes

# Traffic Study

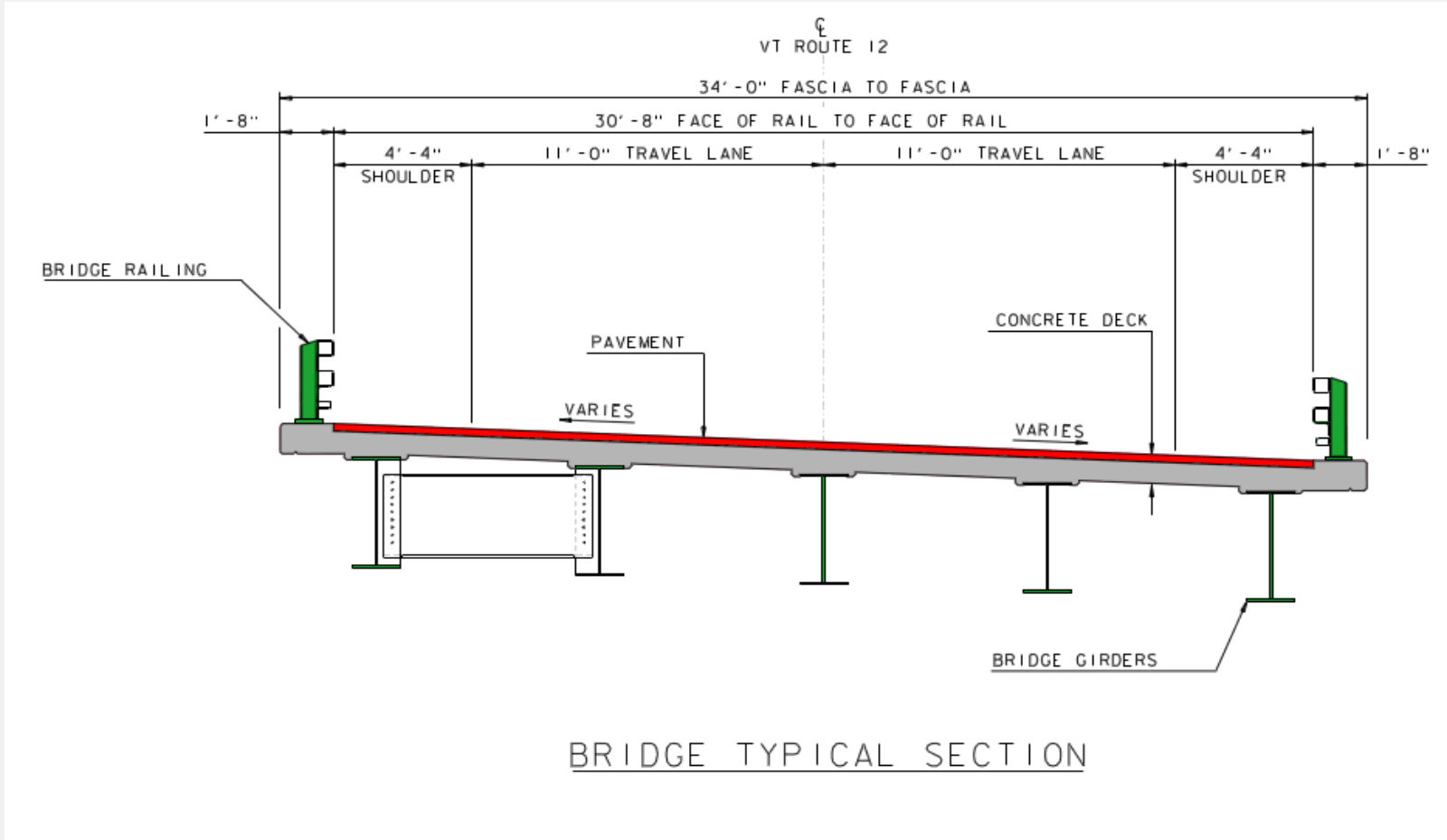
Intersection	Description	Existing LOS	Detour LOS
VT 22A/ VT 17	Two-way stop-controlled; west of Bridge 8 in Addison	A	A
VT 22A (Main Street) / Green Street	Signalized; downtown Vergennes	A	B
US 7 / VT 22A	Signalized; north of Vergennes in Ferrisburgh	A	B
US 7 / VT 17	One-way stop-controlled; east of Bridge 8 in New Haven	A	A

Table 1: Intersection Summary – Existing and Detour Level-of-Service (LOS)

# Work to be Done to Complete Closure

- Permanent bridge superstructure and substructure constructed
- New approach slabs, bridge and approach rails installed
- All courses of pavement, guardrail, signs and final line striping completed

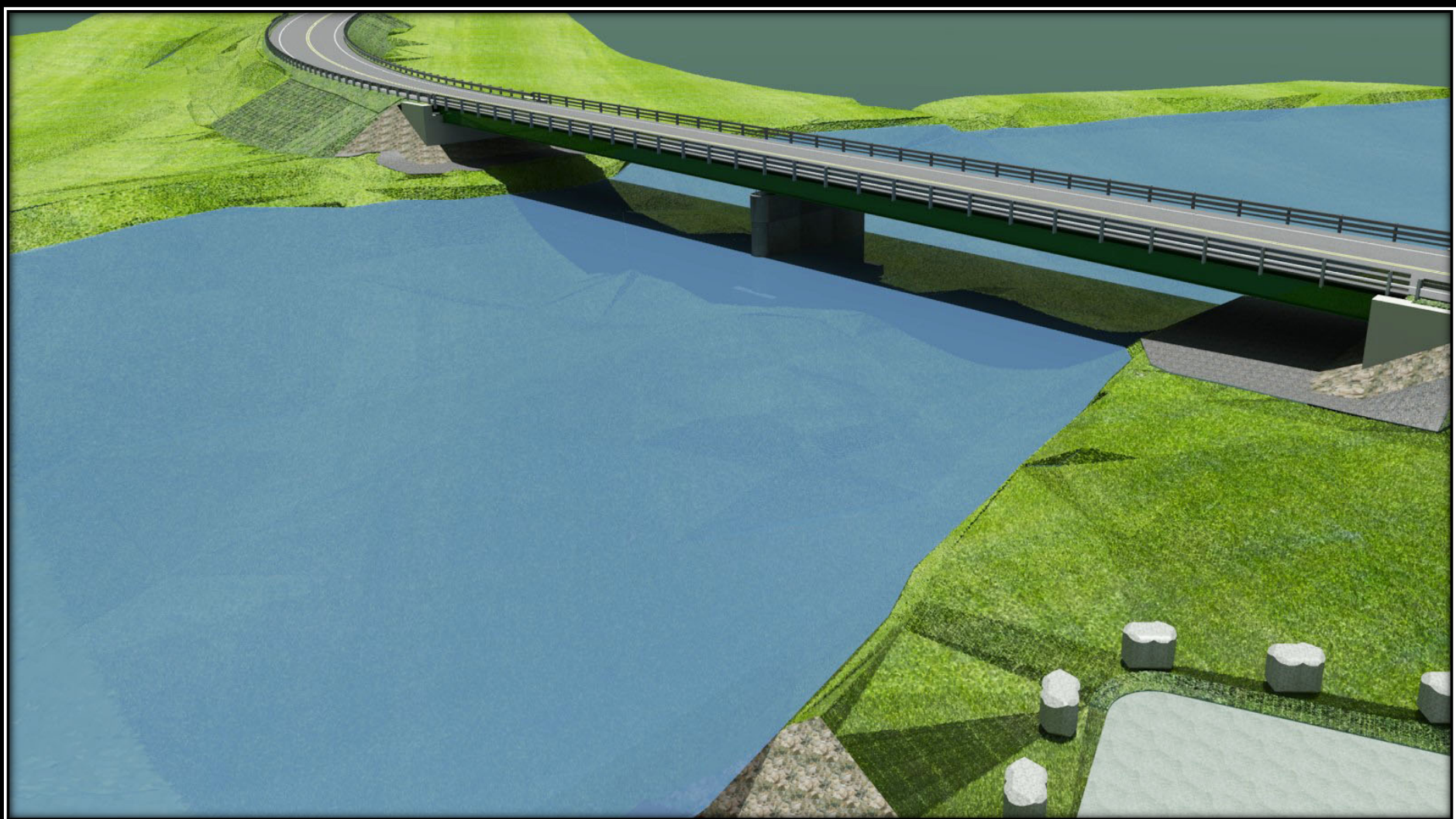
# Typical Section



# Work after closure period

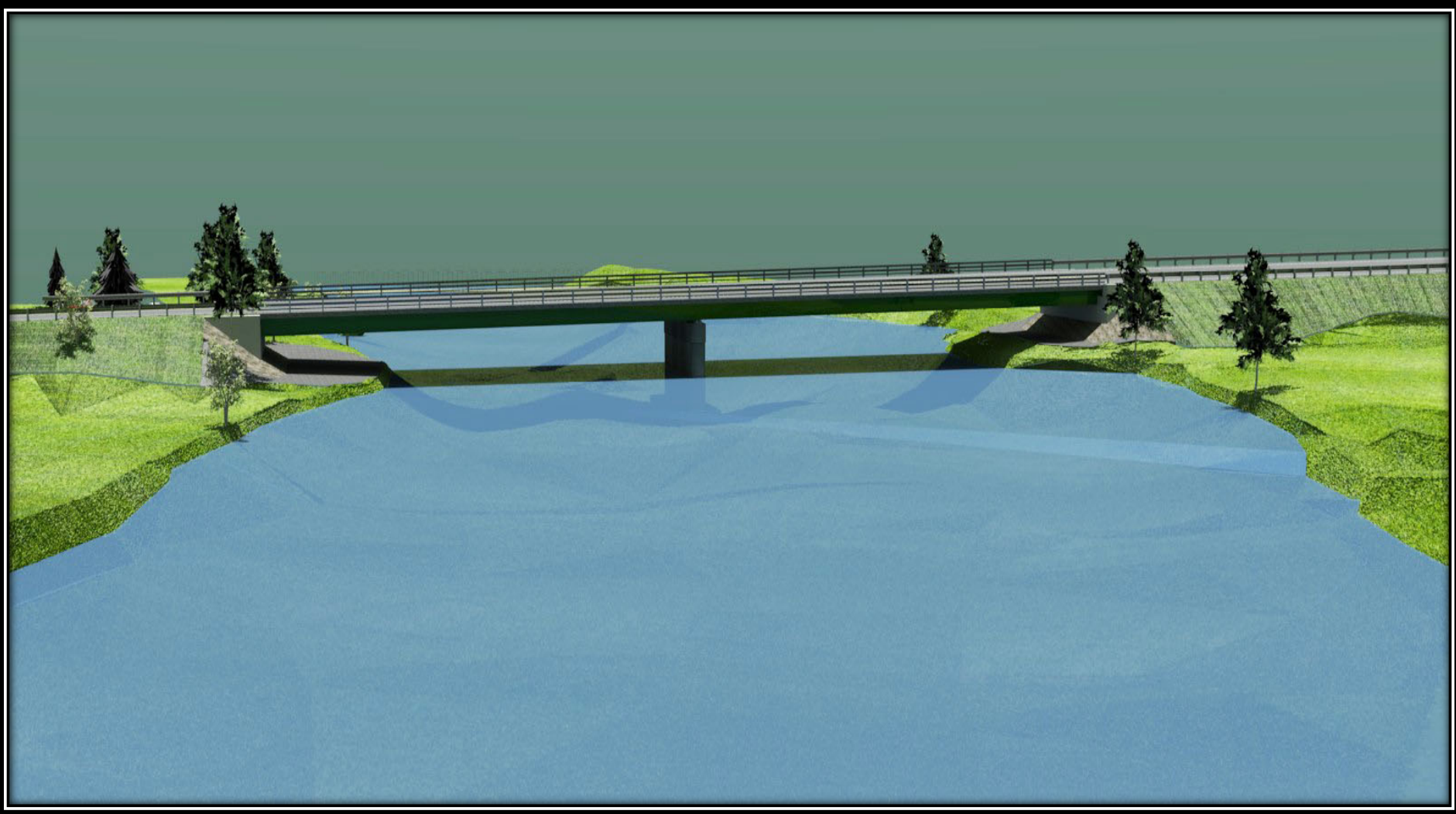
- Install new road signs
- Construct boat launch and parking lot
- Complete landscaping work

# New Bridge Renderings





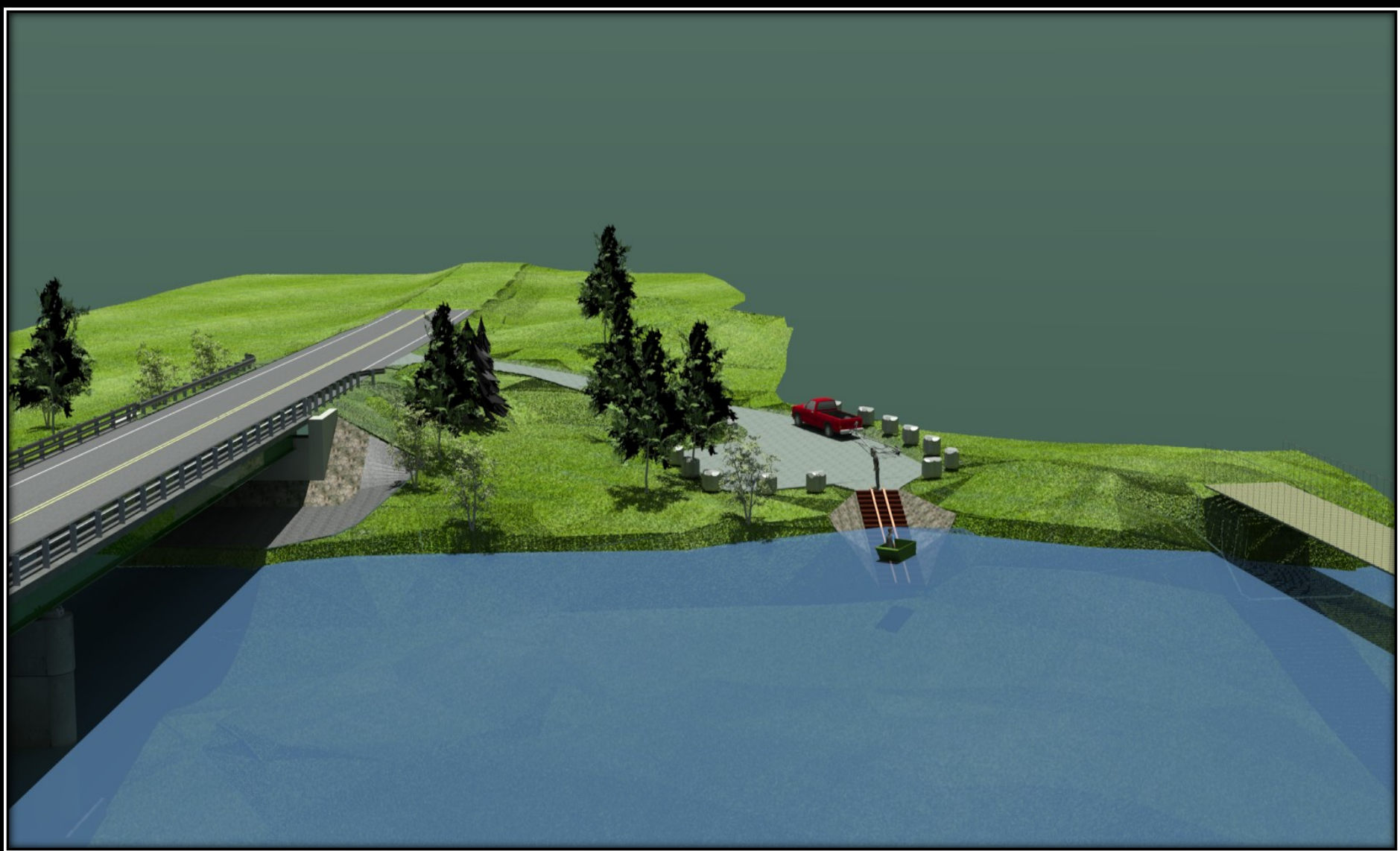
# New Bridge Renderings



# New Bridge Renderings



# New Bridge Renderings



# New Bridge Renderings





# Weybridge-New Haven BF 032-1(19)

## Questions and Comments

Vermont Route 17 – Bridge #8 over Otter Creek

May 2, 2018